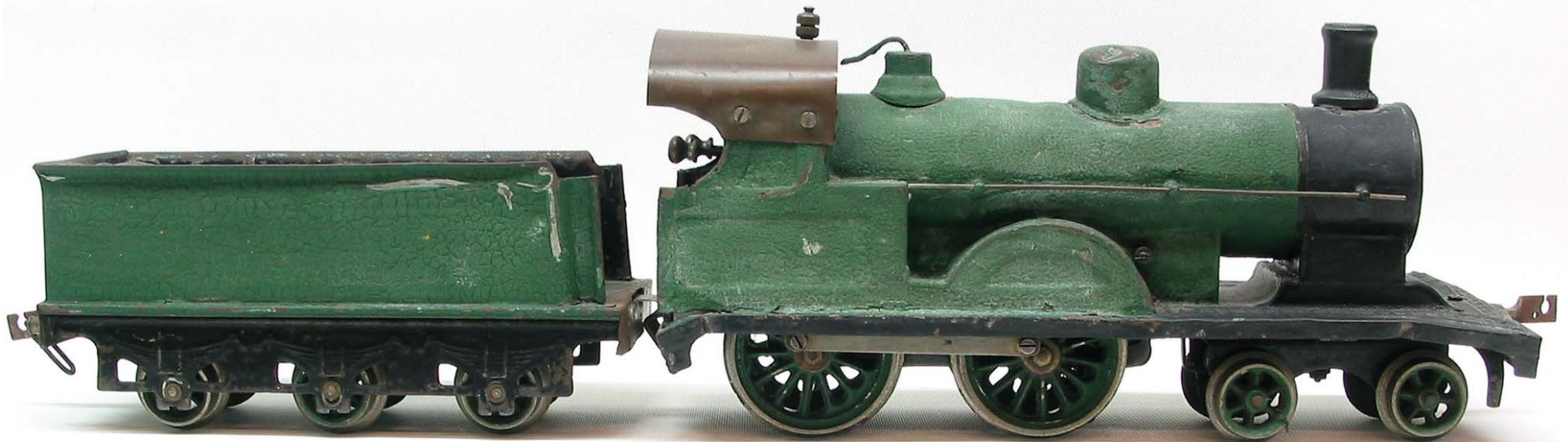


Gauge 1 Ernst Plank Clockwork LNWR 4-4-0 Tender Locomotive - **BEFORE** restoration



Gauge 1 Ernst Plank Clockwork LNWR 4-4-0 Tender Locomotive - BEFORE restoration



Work completed:

Plate Work/Fabrication or replacement of Missing Parts:

- Fabricate and fit a Cab roof, in the correct shape and style to replace the current non original roof. Fill the screw holes in the Cab sides, from where the existing roof was crudely attached. Improve ripples in Cab front. Straighten rear Running Plate below Cab. Replace lead weight missing from under Cab.
- Straighten out buckling of front Running plate, and front Buffer Beam adjacent to and in front of the Smoke Box.
- Improve dents in Smoke Box and Boiler on LH side above 1st and 2nd Hand Rail Knobs. Improve dimple in Boiler on RH side, between 2nd and 3rd Boiler Hand Rail Knobs.
- Improve crease on top of Boiler between Steam Dome and Safety Valve, and dent on RH side of Steam Dome. Improve depression in top of Smoke Box below Chimney.
- Replace missing front & rear Buffers with those of similar style and period as those missing. Replace Boiler Hand Rails. Replace 'home made' Couplings with vintage ones of the correct style and age.

- Straighten ripple to Coal Rail, on LH Side of Tender rear.
- Fabricate & fit missing Tender Left & Right footsteps and 6 Axle Box Covers.
- Clean & Oil Clockwork Mechanism

Livery:

- Paint locomotive in L&NWR Black (lined red/grey) Livery in the correct style for the period.
- Apply LNWR Crest to Splasher Sides.
- Hand paint Cab side Number Plate to simulate a cast plate: "1909"
- Hand paint simulated 'rivets' around Smoke Box
- Tender Sides: apply 'LNWR' Lettering

Simon Greenwood

www.ScaleModelRailways.co.uk

Gauge 1 Ernst Plank Clockwork LNWR 4-4-0 Tender Locomotive - **AFTER** restoration



Simon Greenwood

www.ScaleModelRailways.co.uk

Gauge 1 Ernst Plank Clockwork LNWR 4-4-0 Tender Locomotive - **AFTER** restoration



Simon Greenwood

www.ScaleModelRailways.co.uk

Gauge 1 Ernst Plank Clockwork LNWR 4-4-0 Tender Locomotive - AFTER restoration

